

RETAIL PARK



RUSHMERE

BALTEAGH ROAD

NATALAN

TO LET

TO LET
9,954 SQ FT

B&M STORE AND
GARDEN CENTRE

CURRY'S PCS WORLD
MEGASTORE

HARRY CORRY

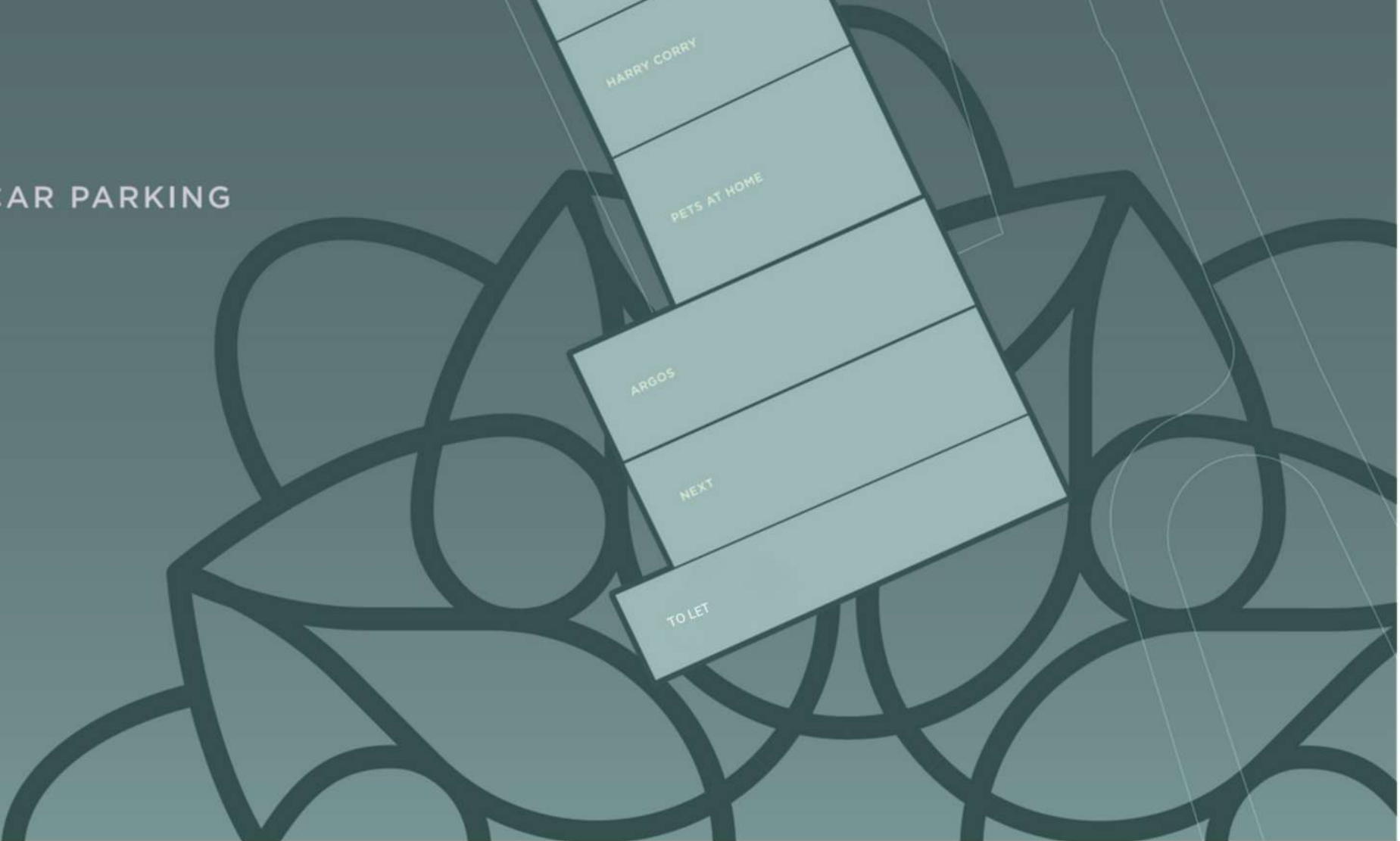
PETS AT HOME

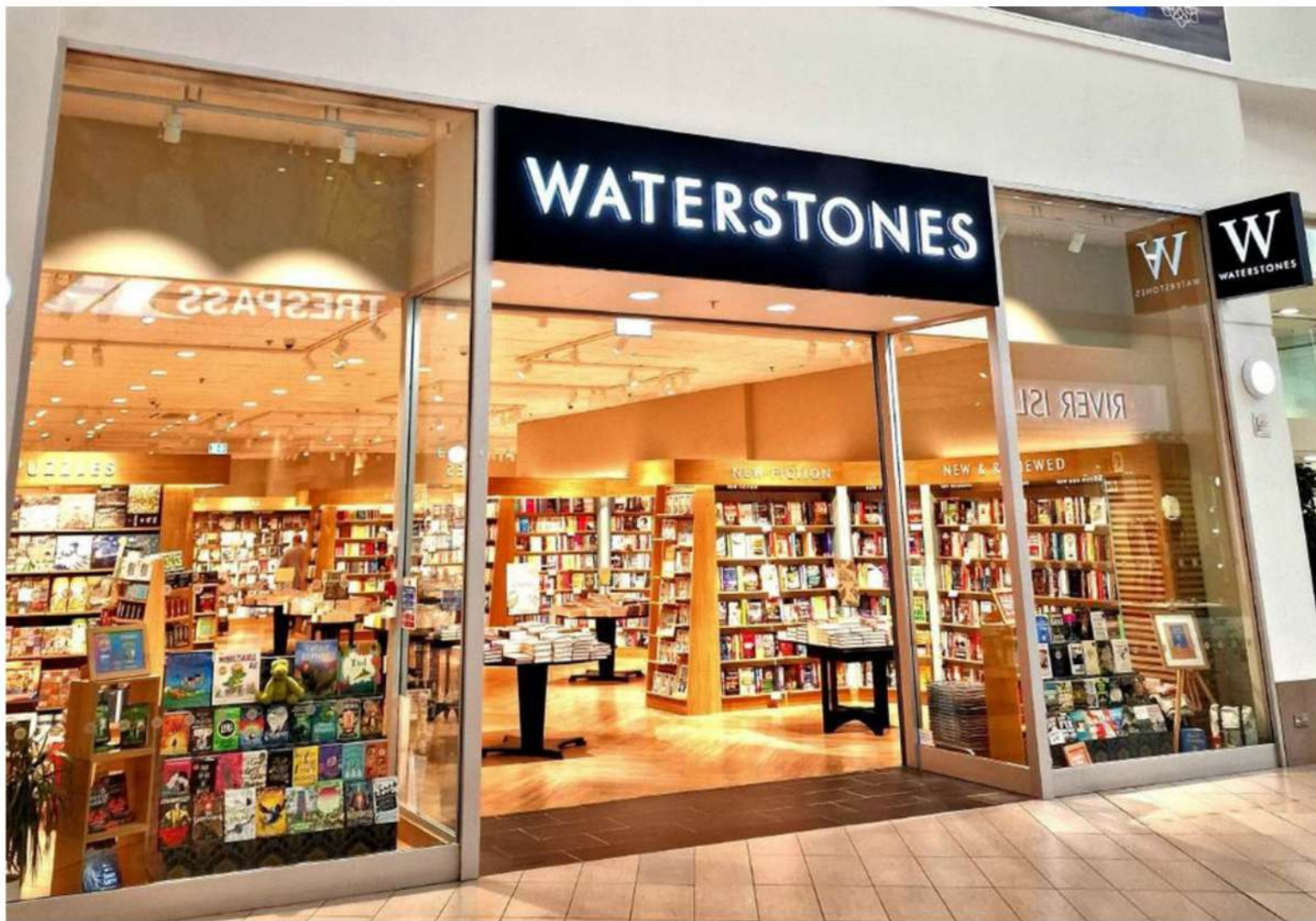
ARGOS

NEXT

TO LET

CAR PARKING







- | | |
|-------------------------------------|-------------------------------|
| A Retail Park | E Bus Station Entrance |
| B 1,800 Free Car Park Spaces | F Shopping Centre |
| C Main Entrance | G West Mall Entrance |
| D Mcdonalds | H Primary Road Access |

